

Company overview

# Getz Clinical Sustainability



Elegant eHealth solutions for every hospital



*‘We are able to use the consistent and comprehensive records to identify areas to improve outcomes and enhance patient safety.’*

Associate Professor Ong Biauwei Chi,  
Director of Patient Safety and Clinical Governance,  
Department of Anaesthesiology, Singapore General Hospital

# Sustainability

**Getz Clinical is committed to business practices which continually reduce our impact on the environment.**

Internally, Getz Clinical identifies and implements strategies to minimise its carbon footprint. Initiatives include maximised use of natural lighting, virtual meetings, work from home policies, and online training and product demonstrations. Offices are situated near public transport and bicycle paths.

Our sustainability commitment extends to helping our customers achieve similar outcomes.

GCC replaces paper records with integrated electronic medical records sourced directly from clinicians, patients and patient monitoring devices. By using our system your hospital can streamline your administrative practices, ultimately reducing your carbon footprint.



**100%**  
replacement of  
paper-based  
patient records

A surgical procedure typically produces at least 15 pages of paper records. For a hospital that treats 10 000 patients per year this equates to at least 150 000 records, resulting in an annual carbon emission of at least 1260kg and requiring 18 000 litres of water. <sup>1</sup>

GCC replaces traditional paper-based records with electronic records, eliminating this impact.

Paperless records support our global customers to achieve [Healthcare Information and Management System Society](#) (HIMSS) Level 7 accreditation.

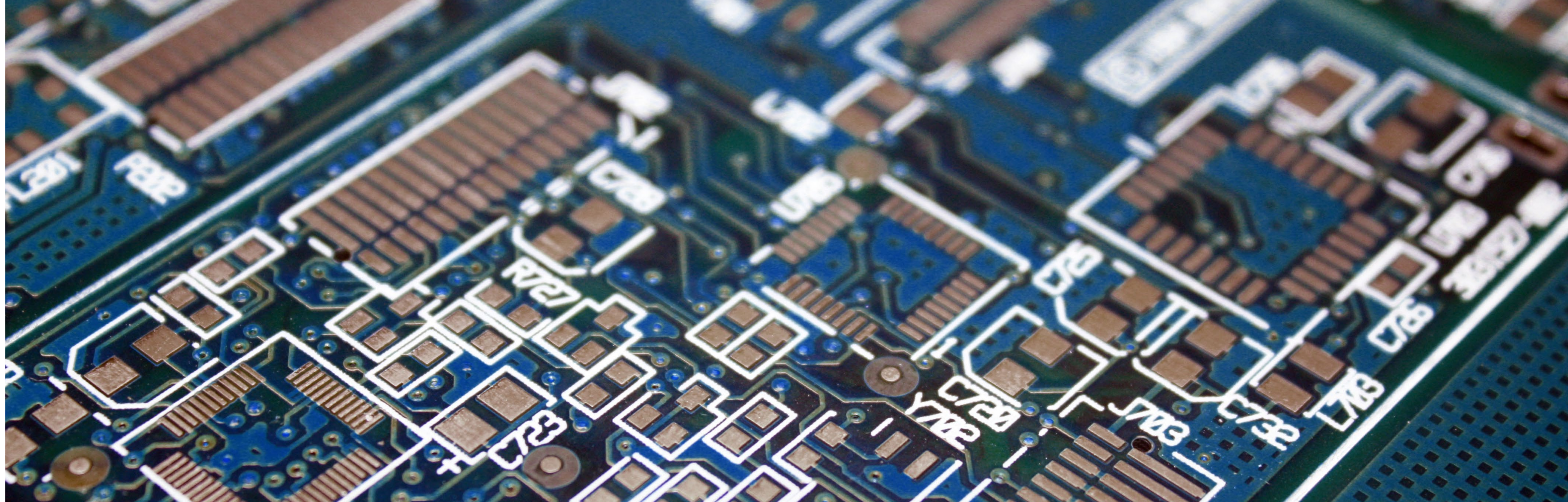
<sup>1</sup> UK Office Workers ‘Addicted’ to Paper, GreenBiz, 23 August 2010

Elegant eHealth solutions  
for every hospital

Paperless records support customers in achieving **HIMSS** Level 7 accreditation







## **88%** improved energy saving through cloud computing

Cloud computing is inherently more environmentally friendly than traditional, on-premise server solutions due to the high rate of data use. Power is not wasted on unused server storage.

Getz Clinical implements cloud computing solutions for storing patient records. Our partner is Amazon Web Services, whose rack-optimised systems use less than 12% of the energy that blade server enclosures often use in corporate data centres.<sup>2</sup>

Amazon Web Services' long-term commitment is to achieve 100% renewable energy usage for their global infrastructure footprint.

## **99%** of Getz Clinical's marketing is electronic

Getz Clinical's marketing strategy is 99% digital. All brochures, proposals, product manuals and support materials are designed for and cater to online viewing through interactive PDFs, web content and other digital media formats.

Our approach results in a significantly reduced carbon footprint through the elimination of print runs and associated transportation costs.

[2 AWS and Sustainable Energy](#)

[3 Carbon Footprint, Manufacturers Monthly, October 2010](#)

## **94%** better than industry averages in corporate printing

The average corporate employee prints 10 000 sheets of paper per year, of which up to 68% is wasted.<sup>3</sup>

In 2014 Getz Clinical adopted a paper-free workplace policy and today our employees print on average 600 sheets per year, 94% better than industry averages.

## **99%** of redundant hardware is recycled

We only use accredited electronic waste recyclers who meet ISO 14001 Environmental Management System standards.

Approximately 99% of our IT hardware components are recycled, which significantly reduces the quantities of toxins, chemical and heavy metals (such as mercury and lead) entering landfills.

**Elegant eHealth solutions  
for every hospital**

**GCC can reduce carbon emission by for a typical  
hospital over one year**

# 1260kg





# Getz Clinical

Getz Clinical is a world leader in perioperative information management systems.

Our solutions, implemented through our GCC suite of software modules, have been deployed in over 50 hospitals and medical centres across Asia, Europe, Africa, Australia and the Pacific.

Major customers include Singapore General Hospital, the University Hospitals of Leicester Trust in the United Kingdom and the Chris Hani Baragwanath Hospital in South Africa. In Australia our solutions are used by the Royal Adelaide Hospital, Lyell McEwin Hospital and Queensland Health.

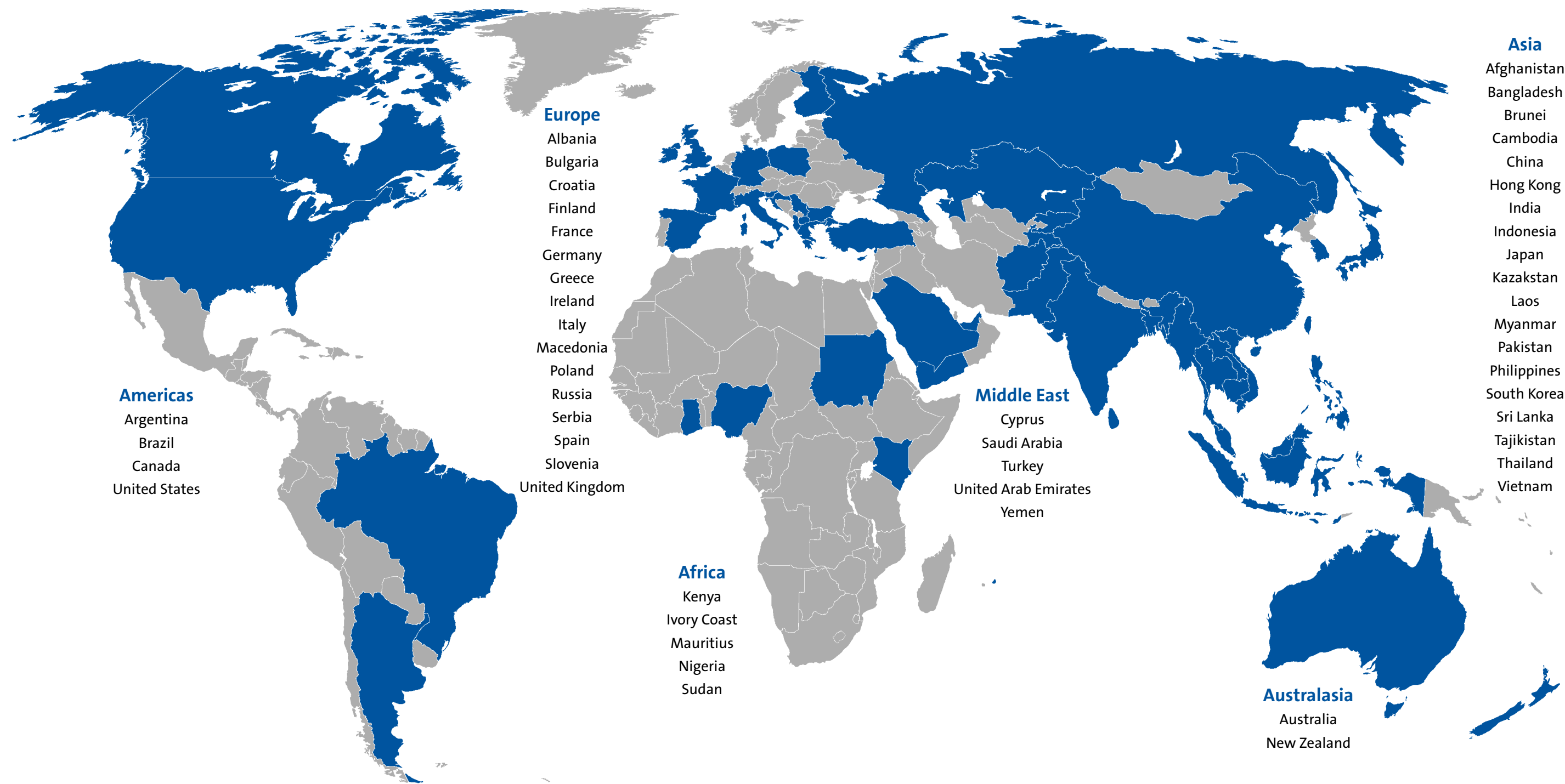
The Queensland Health project, covering 44 hospitals, remains the largest hospital network of its kind in the world.

Getz Clinical has sales and support teams operating out of seven offices in Australia, Singapore, the United Kingdom and the Philippines.

Our team of highly skilled personnel with extensive experience in providing eHealth solutions includes developers, integration specialists, project managers, clinical experts, business analysts, service delivery managers, sales managers and account managers.

Our head office is in Singapore and our development centre is located in Adelaide in South Australia.

Getz Clinical is a subsidiary of the Getz Group of companies. The Getz Group, founded in 1852, is a strategic investment business. Our products and services are delivered by 12,000 employees in 50 countries, with an annual turnover exceeding US\$1.27 billion.



A member of the Getz Group

The Getz Group is a diversified business focusing on healthcare, chemicals, distribution, retailing and hotels.

Adelaide | Auckland | Brisbane | London | Manila | Melbourne | Singapore | Sydney

information@getzclinical.com

www.getzclinical.com

